



BASINGSTOKE MODEL BOAT CLUB

Newsletter

Chairman:

Chris Cole Tel: 07518 244624 Email: colechr@googlemail.com

Secretary/Treasurer/Newsletter Editor

Andy Clark: Tel: 07802 668433 Email: atclark25@yahoo.co.uk

Webmaster

Carl Clement Email: carl@alt-view.co.uk

Website: www.basingstokembc.co.uk

June 2024

Membership News

Due to a number of factors, ill health and rising cost of living being the most stated reasons, the membership has declined since the last club year by nearly 19% and there have been no new members so far this club year.

The current membership now stands at 87, of which 2 are junior members.

New members are always most welcome – if you have a friend that may be interested in model boating or joining the club then please let them know all about us, or tell them to have a look at our website to see for themselves - www.basingstokembc.co.uk

Viables Show

The club held a static display of models at **The Basingstoke and District Model Engineering Society** Spring Gala weekend – **13th/14th April**. Once again the display was near the station which ensured a lot of people were able to view and comment upon the displayed models.



The display was manned over the weekend by, Joe Harwood, Terry Welsh, Dave Powell, Pete Edwards assisted by Chris Cole.

Visit by the Hovercraft Association – 21st April

It was a bright spring day albeit with a chilly moderate breeze blowing when about 6 members of the Association arrived with a range of models. One of our junior members, Jacob Holloway, also brought along his hovercraft model to join in with the association members.



The high level of water in the lake allowed easy hovering and transition from solid surface to water and back again much to the delight of watching club members and the general public.

Visit by the Surface Warships Association

One of our members, Keith Barnes, is also a member of the Surface Warships Association and their Chairman approached the club with a view of us hosting a meeting. This took place on the 5th May when a number of their members travelled from Essex with a range of detailed models to join us at the lake.



Visit by the Vintage Model Yacht Group

In the last newsletter I wrote that this would take place on the 16th June, the day arrived and no members of the VMYG attended. I contacted their Chairman the next day and there had been a mix up in dates.

The VMYG are definitely coming to Eastrop on the 14th of July. Apologies for the confusion.

Next we have the first of a series of articles from Ian Holloway.

A Chance Meeting

One thing that Jacob and I love to do is visit The Historic Dockyard at Portsmouth. Most years we have annual passes and visit the various naval attractions several times a year. In May 2023 we were at the dockyard and in boathouse 4 looking at the various restoration projects. We had just had a go at making rope and a couple sat next to us and we struck up a conversation. From this chance meeting has come a friendship, an amazing story, and a model boat for me to restore.

Lynne and Pete were enjoying a day out at the museum and Pete had booked a tour on the pontoons to view the restored working boats. Jacob and I had done this tour on a previous visit, and it is well worth doing if you have not been to the museum since they started to give guided tours. Pete then asked Jacob if he wanted to go on the tour with him, as Lynne did not really like the idea. So off they went leaving Lynne and me to chat. During our conversation I mentioned that we come to the museum a lot as I make and restore model boats and I gain invaluable knowledge from the dockyard exhibits. Lynne then mentioned that they were going to talk to someone about donating a model boat to the museum. The boat, a RAF Rescue launch had been built by Pete's father but through lack of space had been stored in an attic for the last 8 years or so. Lynne showed me a picture of the model and it looked very well made.

Pete and Jacob were gone for quite some time so we carried on chatting. Lynne then said if she could convince Pete to let us have the boat, would we like it as she felt it would be better to get some fun from the boat rather than it be stuck in storage awaiting display. I accepted on the understanding that if I got it working again Lynne & Pete would come to the boat lake on the day of re-launch. We have continued to exchange messages since that day and in the summer of 23, I travelled to Lynne & Pete's home to collect the model. Over a cup of tea we chatted, and Pete and Lynne shared some memories about the boat and about Pete's father.



The model leaves its dock at Gosport and is received into its new dock in Basingstoke

About the Boat

The model is of a 63' Pinnace, boat 1225, used by the RAF for resupply of RAF seaplanes and ferrying crew out to seaplanes. The model was built sometime between 1962 and 1968 and was originally a free running model where the rudder would be set, motor turned on, and the boat would transit across the water to be caught at the other side of the pond. The quality of the build and the workmanship is exceptional and now some 60 years on is still in excellent condition. Most of the varnish and paintwork is still good and only a few of the fittings will need repair. However, the running gear is totally seized so will need a considerable effort to repair. In addition, I will be converting the model to full radio control.

About the modeller

The reason for such an outstanding representation of the RAF launch became clear through discussion. Pete's father, also named Peter, was a professional seaman through and through. From an early age all he wanted to do was go to sea. But at age 16 he was too young for the Royal Navy so he 'ran away' from home to join the Merchant Navy. Two years later he returned home but instead of joining the Royal Navy joined the relatively new, RAF Marine Branch. Peter senior served until the RAF Marine Branch was disbanded by which time he had reached the rank of Flight Sergeant and was a coxswain. He served in many places, but my research has revealed that he probably served on 1225 when it was stationed in Gibraltar.

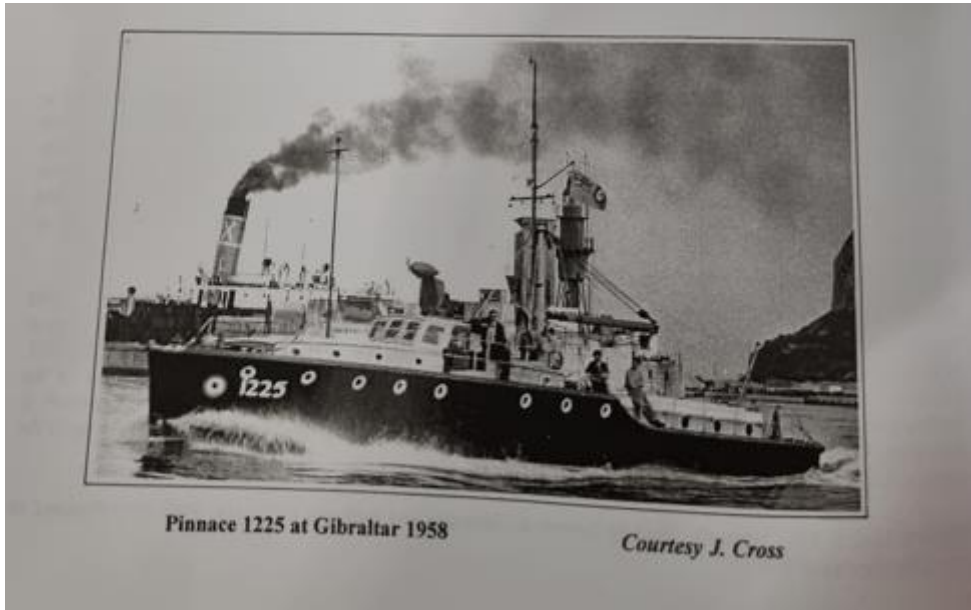


Image Taken from Information provided by World Shipping Association-Chatham Dockyard

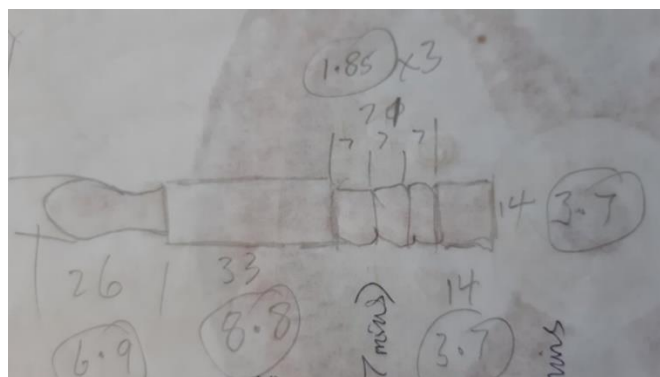
Next Steps

I have started the restoration but as the temperatures in my workshop plummet in the winter it is a little cold for comfort. With work stalled I am currently researching about the RAF Marine Branch and these amazing vessels. I am also in constant contact with Lynne & Pete.

Thanks Ian we look forward to the next instalment.

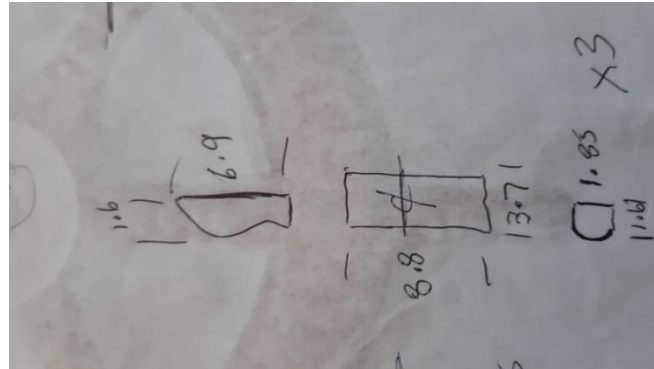
Building a ships wheel by Keith Ebsworth

I always intended to fit out the wheel house on the Mississippi stern wheeler but had not got around to it. Having some time on my hands recently I decided to start with the ships wheel. On the real boats the wheel almost covers the width of the wheel house and usually has between 6 and 12 spokes. I settled on sixty millimetre diameter as it would be large enough to cover most of the width on the model. I liked the look of the all wood 6 spoke wheels so sketched something out to get an idea of what was practical at the smaller scale.

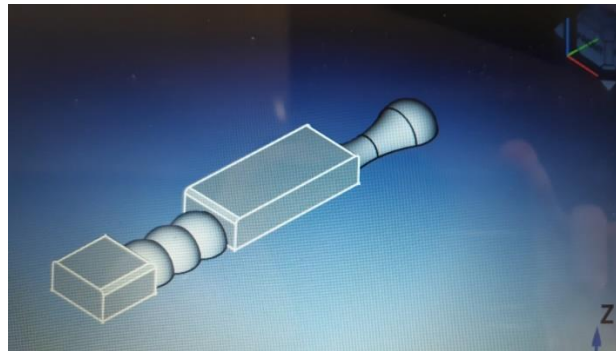


I had already decided that I would try to construct it in a similar manner to the real ones.

The wheel would be constructed around a centre boss of 10 mm diameter with 6 equally spaced spokes each 25mm long. The rim is constructed in 3 layers, the centre layer being made up of 6 curved sections that are the same thickness as the spokes and fit between the spokes to fix the spacing. Additional pieces form a back and front rim and are pegged to the spokes and inner rim to align everything and provide extra strength.



I then turned to FreeCad which is my new go to piece of software for 3D design. FreeCad is free software that allows you to sketch any idea, turn it into a 3d model and export the code to machine it on a cnc router.



The FreeCad design and the machined parts.

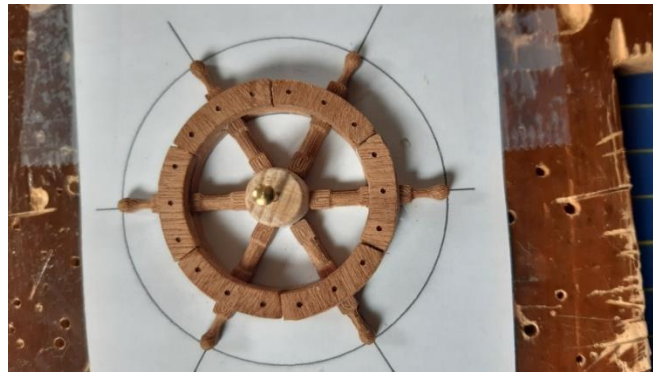


Having cut the spokes I turned my attention to the rim pieces. As these are much simpler I use Carbide Create (Also free) to design the 6 plain parts for the inner rim and 12 detailed parts for the outer rims. The 3 recessed holes on each outer piece are for the fixing pegs.

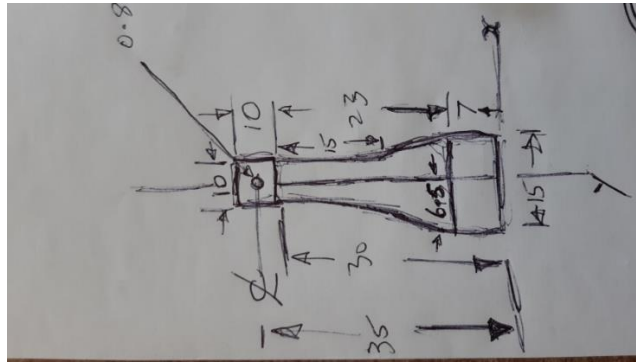


As usual machining them was not straight forward. As the parts are so small my normal method of double sided tape provided inadequate and parts were flying around the garage on the final cut through. I resorted to having my dust collector running and vacuuming up each part as it broke free. In hind sight emptying the dust collector first would have been a good idea as finding them in a 400mm diameter bin with 70mm of wood dust in it was not easy.

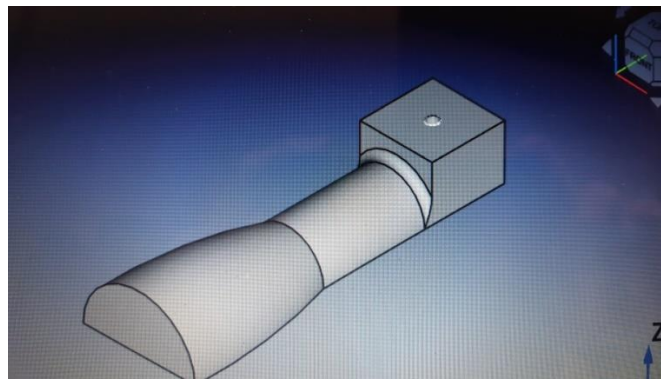
As the fixing pegs would have been 1mm diameter I did not fit them but used a life sized drawing of the wheel to allow me to align parts when gluing.



With the wheel sorted I now needed a post to mount it on so once more the back of an envelope proved useful.



FreeCad to the rescue and the post was designed.



The next day I did a quick test run with some scrap wood on the cnc to make sure the finished item looked correct and I then used a piece of Sapele left over from the Victorian launch build and cut the final one.



I gave the finished parts 3 coats of yacht varnish and left them to dry for 3 days before assembling the wheel to the post.



Thanks Keith, we hope to see the finished wheel on your Mississippi Stern Wheeler soon.

Close

Well that's it for this issue, for those of you taking bets on this, according to word count there are only 1850 words in this edition with a large number of pictures. I hope you found at least some of them worthwhile. Articles from members for newsletters are always very welcome so if you are restoring a model or undertaking a new build share your experiences with the whole club.

*Cheers
Andy*

*To save costs the Newsletter is printed in black and white so you miss some of the detail of the photos in colour, etc. – if you would like to see it in full colour I will as usual ask **Carl** to add a copy to our BMBC website.*